

HOLE # : **N0905**

**TROYMET EXPLORATION CORP.
GOLDEN EAGLE PROJECT
DIAMOND DRILL LOG**

HOLE # : **N0905**

UTM Coordinates NAD 83, Zone 8

Collar Survey Type: **Garmin hand held GPS**Northing : **6641365**Easting : **506781**Elevation (m) : **1583 m.**Hole Length : **70.10 m.**Azimuth (true) : **0**Dip : **-45**

NTS : 104M/15

Core Size: **NTW**Overburden : **4.57 m.**

Contractor : Kluane Drilling Ltd

Logged By : **Derek Torgerson**Date Hole Started : **October 12, 2009**Date Hole Completed : **October 13, 2009****Sulphide Mins**

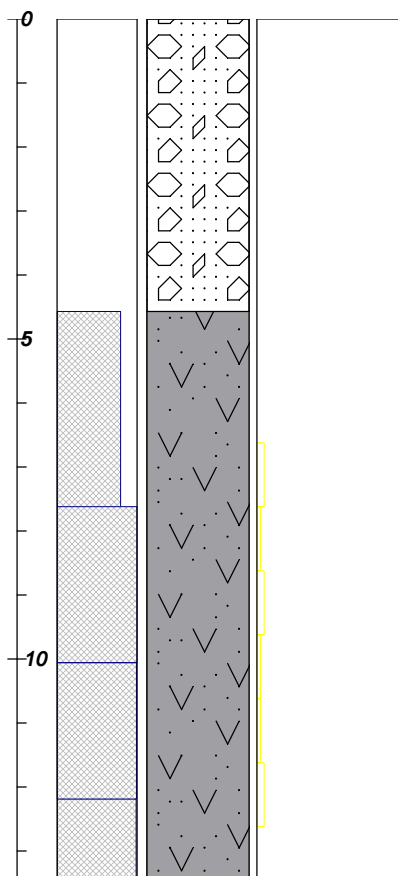
— pyrite
— chalcopyrite
— arsenopyrite

Recovery
0 % 100%
0% 10%
From (m) To (m)

DESCRIPTION

----- **Sample Data** -----

From (m)	To (m)	Wdth (m)	Sample	Au (g/t)	Ag (g/t)
----------	--------	----------	--------	----------	----------

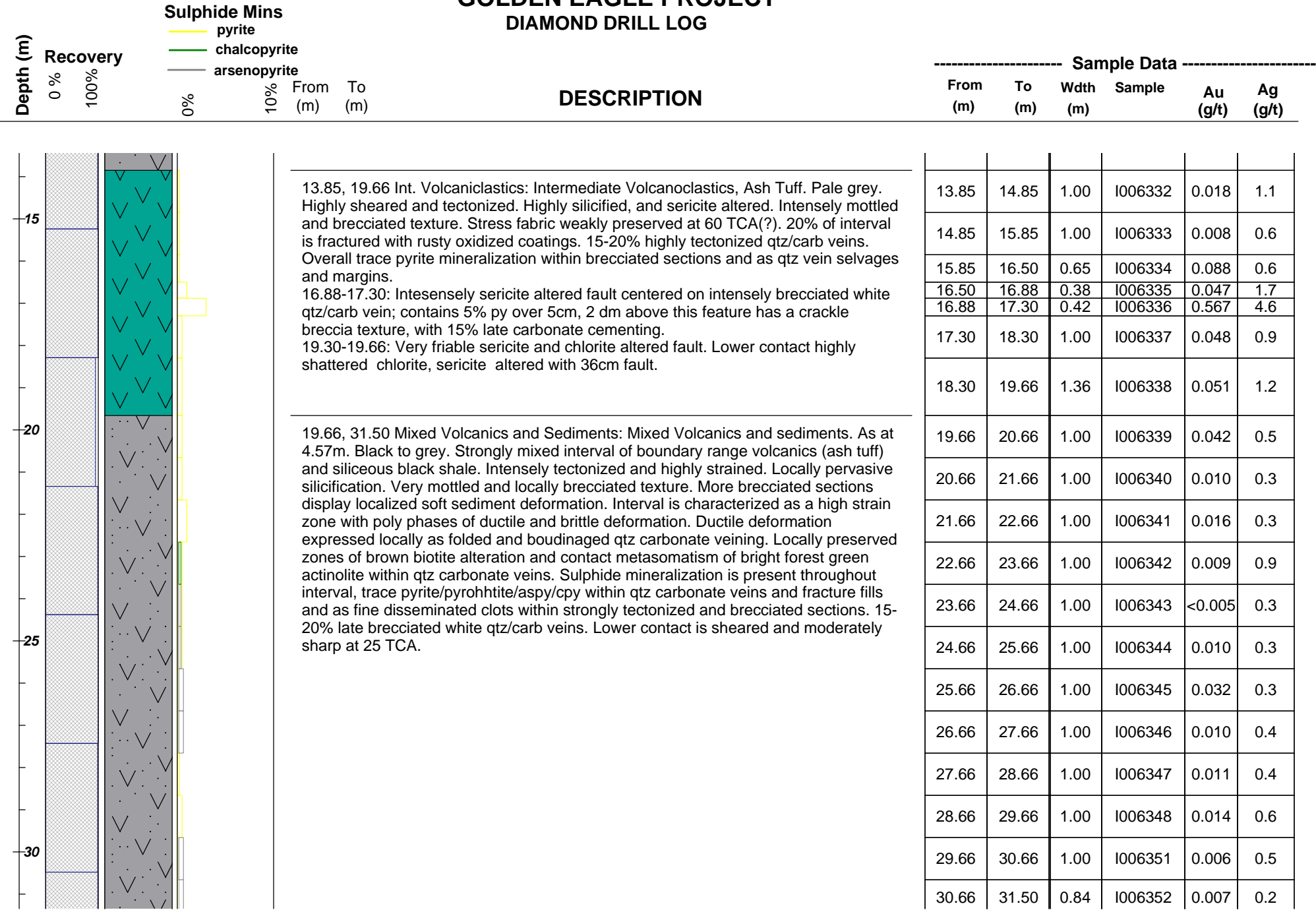


0.00, 4.57 OVB: Boulders and overburden

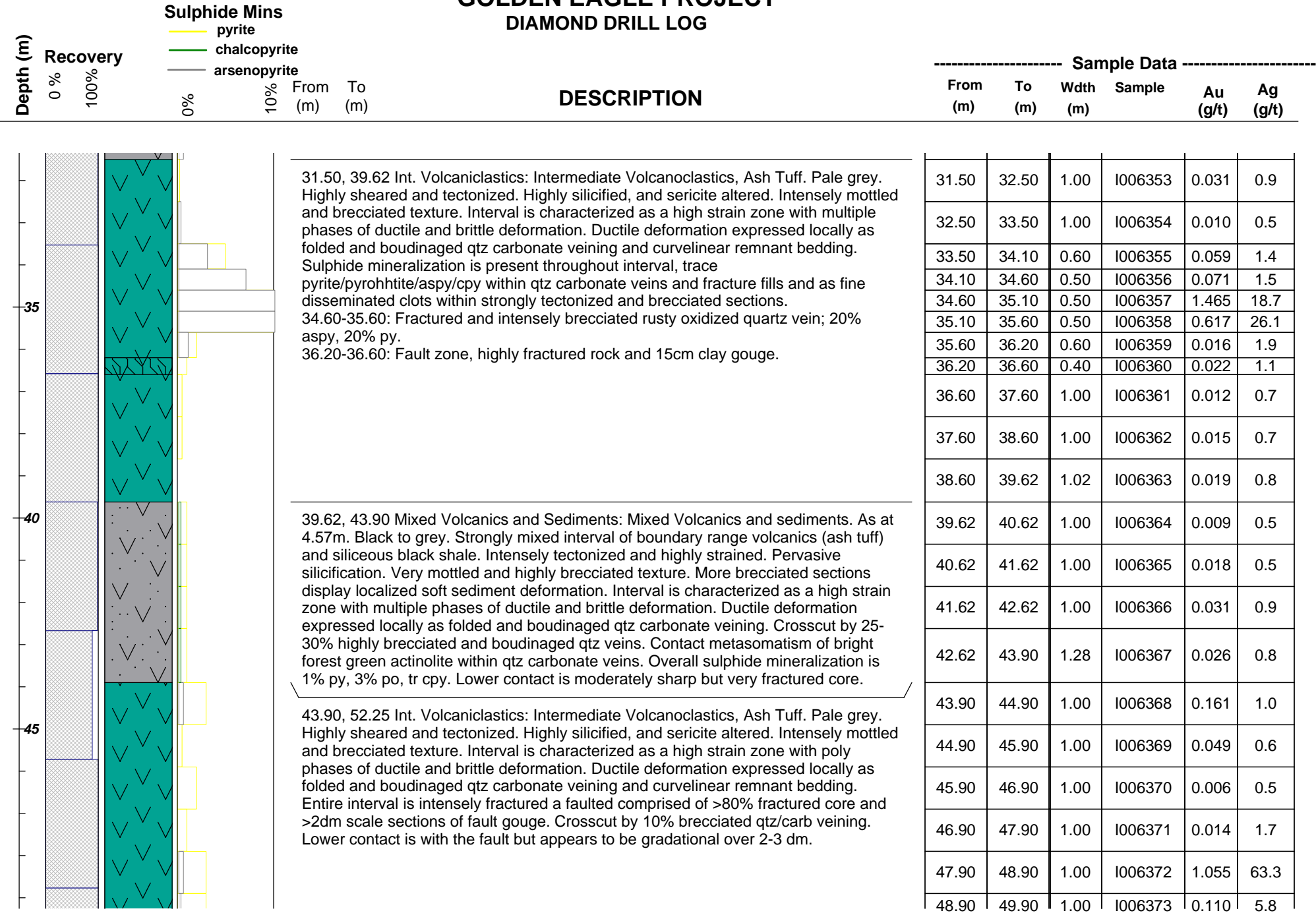
4.57, 13.85 Mixed Volcanics and Sediments: Mixed Volcanics and sediments. Black to grey. Strongly mixed interval of boundary range volcanics (ash tuff) and siliceous black shale. Intensely tectonized and highly strained. Locally pervasive silicification. Very mottled and locally brecciated texture. More brecciated sections display localized soft sediment deformation. Interval is characterized as a high strain zone with multiple phases of ductile and brittle deformation. Ductile deformation expressed locally as folded and boudinaged qtz carbonate veining. Locally preserved zones of brown biotite alteration and contact metasomatism of bright forest green actinolite within qtz carbonate veins. Sulphide mineralization is weak, trace pyrohhhtite and pyrite within qtz carbonate veins and fracture fills. Alteration is sericite, brown biotite, silicification and rarely chlorite. 70% of interval is fractured with pervasive rusty oxidation of fracture surfaces. Lower contact is gradational over 2 dm.

6.62	7.62	1.00	I006325	0.013	0.6
7.62	8.62	1.00	I006326	0.009	0.5
8.62	9.62	1.00	I006327	0.005	0.4
9.62	10.62	1.00	I006328	<0.005	0.3
10.62	11.62	1.00	I006329	0.007	0.4
11.62	12.62	1.00	I006330	0.005	0.5
12.62	13.85	1.23	I006331	0.009	0.8

TROYMET EXPLORATION CORP.
GOLDEN EAGLE PROJECT
DIAMOND DRILL LOG



TROYMET EXPLORATION CORP.
GOLDEN EAGLE PROJECT
DIAMOND DRILL LOG



31.50, 39.62 Int. Volcaniclastics: Intermediate Volcanoclastics, Ash Tuff. Pale grey. Highly sheared and tectonized. Highly silicified, and sericite altered. Intensely mottled and brecciated texture. Interval is characterized as a high strain zone with multiple phases of ductile and brittle deformation. Ductile deformation expressed locally as folded and boudinaged qtz carbonate veining and curvilinear remnant bedding. Sulphide mineralization is present throughout interval, trace pyrite/pyrohhtite/aspy/cpy within qtz carbonate veins and fracture fills and as fine disseminated clots within strongly tectonized and brecciated sections.

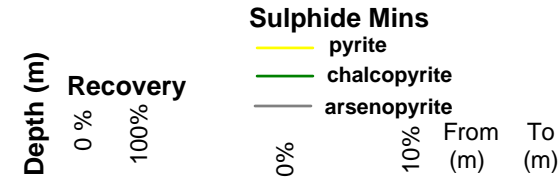
34.60-35.60: Fractured and intensely brecciated rusty oxidized quartz vein; 20% aspy, 20% py.

36.20-36.60: Fault zone, highly fractured rock and 15cm clay gouge.

39.62, 43.90 Mixed Volcanics and Sediments: Mixed Volcanics and sediments. As at 4.57m. Black to grey. Strongly mixed interval of boundary range volcanics (ash tuff) and siliceous black shale. Intensely tectonized and highly strained. Pervasive silicification. Very mottled and highly brecciated texture. More brecciated sections display localized soft sediment deformation. Interval is characterized as a high strain zone with multiple phases of ductile and brittle deformation. Ductile deformation expressed locally as folded and boudinaged qtz carbonate veining. Crosscut by 25-30% highly brecciated and boudinaged qtz veins. Contact metasomatism of bright forest green actinolite within qtz carbonate veins. Overall sulphide mineralization is 1% py, 3% po, tr cpy. Lower contact is moderately sharp but very fractured core.

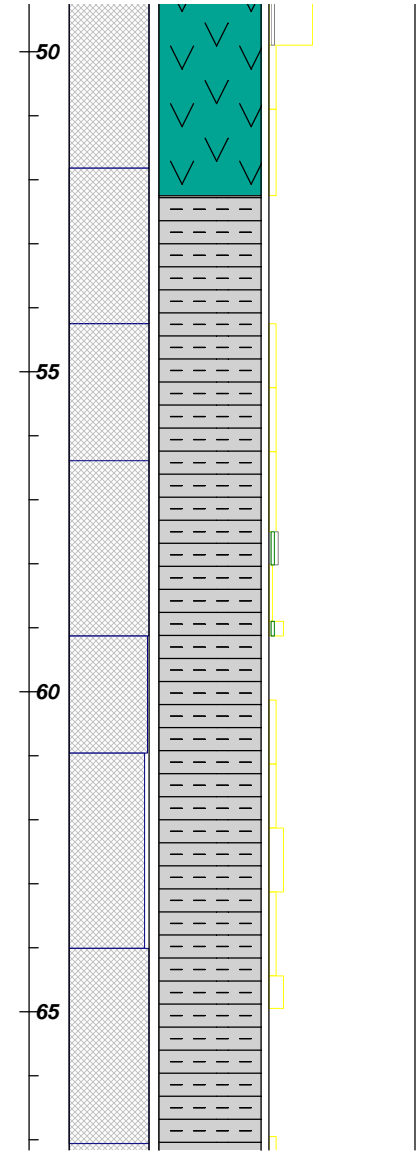
43.90, 52.25 Int. Volcaniclastics: Intermediate Volcanoclastics, Ash Tuff. Pale grey. Highly sheared and tectonized. Highly silicified, and sericite altered. Intensely mottled and brecciated texture. Interval is characterized as a high strain zone with poly phases of ductile and brittle deformation. Ductile deformation expressed locally as folded and boudinaged qtz carbonate veining and curvilinear remnant bedding. Entire interval is intensely fractured a faulted comprised of >80% fractured core and >2dm scale sections of fault gouge. Crosscut by 10% brecciated qtz/carb veining. Lower contact is with the fault but appears to be gradational over 2-3 dm.

TROYMET EXPLORATION CORP.
GOLDEN EAGLE PROJECT
DIAMOND DRILL LOG



DESCRIPTION

Sample Data					
From (m)	To (m)	Width (m)	Sample	Au (g/t)	Ag (g/t)



52.25, 70.10 Shale: Black Shale and Argillaceous shale. Very compact and fine grained. Locally moderately preserved remnant bedding at 80 TCA. Crosscut by 20% brecciated actinolite/chlorite rich qtz veins on the 0.5-2 dm scale. Upper 5m of interval is intensely fractured. Core remains intensely tectonized and locally brecciated, but appears to becoming more competent and homogenous downhole. Silicification remains pervasive throughout.

57.50-58.02: Brecciated and mottled Qtz-actinolite-chlorite vein; 2% po, 0.5% aspy, 0.25% cpy.

58.90-59.13: Brecciated and mottled Qtz-actinolite-chlorite vein; 5% po, 1% py, 0.25% aspy, 0.25% cpy.

64.44-64.95: 28cm Brecciated and mottled Qtz-actinolite-chlorite vein; 3% po, 1% py; very bleached-sericite altered contacts at 45 TCA.

49.90	50.90	1.00	I006374	0.071	1.4
50.90	52.25	1.35	I006375	0.011	0.5
52.25	53.25	1.00	I006376	0.009	0.7
53.25	54.25	1.00	I006377	0.016	0.9
54.25	55.25	1.00	I006378	0.011	0.3
55.25	56.25	1.00	I006379	0.010	0.4
56.25	57.50	1.25	I006380	0.009	0.4
57.50	58.02	0.52	I006381	<0.005	0.4
58.02	58.90	0.88	I006382	0.028	0.4
58.90	59.13	0.23	I006383	0.062	0.5
59.13	60.13	1.00	I006384	0.023	0.5
60.13	61.13	1.00	I006385	0.024	0.4
61.13	62.13	1.00	I006386	0.021	0.4
62.13	63.13	1.00	I006387	0.017	0.4
63.13	64.44	1.31	I006388	0.020	0.5
64.44	64.95	0.51	I006389	0.009	0.5
64.95	65.95	1.00	I006390	<0.005	<0.2
65.95	66.95	1.00	I006391	0.009	0.4

TROYMET EXPLORATION CORP.
GOLDEN EAGLE PROJECT
DIAMOND DRILL LOG

